

ARP-550AX Series

Waterproof Industrial Panel PCs

- Stainless Steel Enclosure
- Intel E3845 1.91GHz ATOM CPU
- 8GB DDR3 SO-DIMM Memory
- Dual Gigabit LAN ■ WiFi Connectivity (Optional)
- 1 x 2.5" SATA HDD



8GB DDR3



WaterProof



Wifi Connectivity

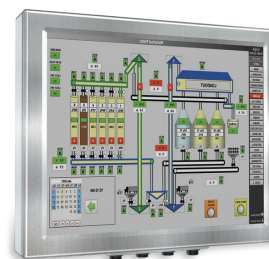
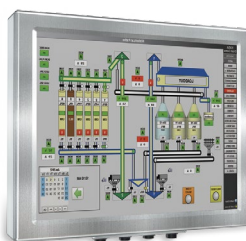


Fanless & silence



Waterproof

Intel Atom (Bay Trail) Platform



PRODUCT SPECIFICATIONS	ARP-5515AX-E01	ARP-5517AX-E01	ARP-5519AX-E01
LCD Display			
Display Size (Diagnol)	15.0 inch	17.0 inch	19.0 inch
Resolution	1024 x 768	1280 x 1024	1280 x 1024
Backlight Lifetime (Hours)	50,000 hours	50,000 hours	50,000 hours
Visual Characteristics			
Colors	16.7 millions	16.7 millions	16.7 millions
Aspect ratio	4:3	5:4	5:4
Viewing angle (V/H)	140° / 170°	160° / 140°	160° / 170°
Response time (Typical)	5 ms	30 ms	30 ms
Pixel Pitch (mm)	0.297 x 0.297	0.264 x 0.264	0.294 x 0.294
Contrast ratio	700 : 1	800 : 1	1000 : 1
Brightness	300 nits (max)	350 nits	450 nits
Touch Screen			
Technology	5 Wire Resistive	5 Wire Resistive	5 Wire Resistive
Touch Rating	35 Million Touches	35 Million Touches	35 Million Touches
MTBF	490,000 hours	490,000 hours	490,000 hours
Interface	USB	USB	USB
System			
CPU	Intel E3845 1.91GHz Quad Core ATOM CPU	Intel E3845 1.91GHz Quad Core ATOM CPU	Intel E3845 1.91GHz Quad Core ATOM CPU
Chipset	Bay Trail	Bay Trail	Bay Trail
Memory	Up to 8GB DDR3 SO-DIMM	Up to 8GB DDR3 SO-DIMM	Up to 8GB DDR3 SO-DIMM
Video Controller	Intel Gen7 Intel Graphics DX 11, OGL3.2	Intel Gen7 Intel Graphics DX 11, OGL3.2	Intel Gen7 Intel Graphics DX 11, OGL3.2
External Video Output	N/A	N/A	N/A
Storage Option	2.5" HDD, 2.5" SSD, CFast Card	2.5" HDD, 2.5" SSD, CFast Card	2.5" HDD, 2.5" SSD, CFast Card
Compact Flash	N/A	N/A	N/A
Keyboard / Mouse	USB	USB	USB
Audio	N/A	N/A	N/A
Watchdog Timer	Programmable 1 - 255 sec	Programmable 1 - 255 sec	Programmable 1 - 255 sec
Remote Boot	ThinManager Ready, PXE	ThinManager Ready, PXE	ThinManager Ready, PXE
Expansion Slot	N/A	N/A	N/A
I/O Communication			
USB Port	2 x USB 2.0 (Revision update at 9/14/2017)	2 x USB 2.0 (Revision update at 9/14/2017)	2 x USB 2.0 (Revision update at 9/14/2017)
Serial Port	N/A	N/A	N/A
IEEE 1394	N/A	N/A	N/A
LAN	1 x Gigabit (Revision update at 9/14/2017)	1 x Gigabit (Revision update at 9/14/2017)	1 x Gigabit (Revision update at 9/14/2017)
Parallel	N/A	N/A	N/A
GPIO	N/A	N/A	N/A
Smart Battery			
External Smart Battery	N/A	N/A	N/A
OS Support			
OS Support	Windows 7 & up	Windows 7 & up	Windows 7 & up
Power/Thermal Specs			
Power Requirement (Max)	24VDC / 1.17A	24VDC / 1.25A	24VDC / 1.2A
Power Consumption (Max)	28 W	30 W	30 W
Recommended Power Supply	40 W	43 W	43 W
Heat Dissipation	96 BTU/hr	103 BTU/hr	103 BTU/hr
Physical Information			
Mounting	Pedestal, VESA, Wall and Ceiling mount, Benchtop	Pedestal, VESA, Wall and Ceiling mount, Benchtop	Pedestal, VESA, Wall and Ceiling mount, Benchtop
Net Weight	32 Lbs/ 14.52 kg	34 Lbs / 15.42 Kg	35 Lbs / 15.88 Kg
Physical Dimension (W x H x D)	14.51 x 12.42 x 4.09 inch 368.6 x 315.5 x 103.9 mm	15.88 x 14.07 x 4.36 inch 403.4 x 357.4 x 110.7 mm	17.80 x 15.19 x 4.40 inch 452.1 x 385.8 x 111.8 mm
Recommended Cutout	N/A	N/A	N/A
Dimension (WxH)	N/A	N/A	N/A
Environmental			
Operating Temp	0~50°C (32~122°F)	0~50°C (32~122°F)	0~50°C (32~122°F)
Storage Temp	-20~60°C (-4~140°F)	-20~60°C (-4~140°F)	-20~60°C (-4~140°F)
Relative Humidity	0~95%	0~95%	0~95%
IP/NEMA Rating	Meets NEMA 4X	Meets NEMA 4X	Meets NEMA 4X
Certification	N/A	N/A	N/A

Waterproof

Skylake U-Series



PRODUCT SPECIFICATIONS	ARP-5515AX-H01	ARP-5517AX-H01	ARP-5519AX-H01
LCD Display			
Display Size (Diagnol)	15.0 inch	17.0 inch	19.0 inch
Resolution	1024 x 768	1280 x 1024	1280 x 1024
Backlight Lifetime (Hours)	50,000 hours	50,000 hours	50,000 hours
Visual Characteristics			
Colors	16.7 millions	16.7 millions	16.7 millions
Aspect ratio	4:3	5:4	5:4
Viewing angle (V/H)	140° / 170°	160° / 140°	160° / 170°
Response time (Typical)	5 ms	30 ms	30 ms
Pixel Pitch (mm)	0.297 x 0.297	0.264 x 0.264	0.294 x 0.294
Contrast ratio	700 : 1	800 : 1	1000 : 1
Brightness	300 nits (max)	350 nits	450 nits
Touch Screen			
Technology	5 Wire Resistive	5 Wire Resistive	5 Wire Resistive
Touch Rating	35 Million Touches	35 Million Touches	35 Million Touches
MTBF	490,000 hours	490,000 hours	490,000 hours
Interface	USB	USB	USB
System			
CPU	Intel 2.6/3.4 GHz i7-6600U, 2.4/3.0 GHz i5-6300U 6 GHz Celeron-3855U	Intel 2.6/3.4 GHz i7-6600U, 2.4/3.0 GHz i5-6300U 6 GHz Celeron-3855U	Intel 2.6/3.4 GHz i7-6600U, 2.4/3.0 GHz i5-6300U 6 GHz Celeron-3855U
Chipset	By CPU	By CPU	By CPU
Memory	Up to 16GB DDR4 SO-DIMM	Up to 16GB DDR4 SO-DIMM	Up to 16GB DDR4 SO-DIMM
Video Controller	INTEL HD Graphics 520	INTEL HD Graphics 520	INTEL HD Graphics 520
External Video Output	VGA, HDMI	VGA, HDMI	VGA, HDMI
Storage Option	2.5" HDD, 2.5" SSD, CFast Card	2.5" HDD, 2.5" SSD, CFast Card	2.5" HDD, 2.5" SSD, CFast Card
Compact Flash	Optional	Optional	Optional
Keyboard / Mouse	USB / PS2	USB / PS2	USB / PS2
Audio	N/A	N/A	N/A
Watchdog Timer	Yes	Yes	Yes
Remote Boot	N/A	N/A	N/A
Expansion Slot	Mini PCIe x 1	Mini PCIe x 1	Mini PCIe x 1
I/O Communication			
USB Port	2 x USB 2.0 (Revision update at 9/14/2017)	2 x USB 2.0 (Revision update at 9/14/2017)	2 x USB 2.0 (Revision update at 9/14/2017)
Serial Port	N/A	N/A	N/A
IEEE 1394	N/A	N/A	N/A
LAN	1 x Gigabit (Revision update at 9/14/2017)	1 x Gigabit (Revision update at 9/14/2017)	1 x Gigabit (Revision update at 9/14/2017)
Parallel	N/A	N/A	N/A
GPIO	N/A	N/A	N/A
Smart Battery			
External Smart Battery	N/A	N/A	N/A
OS Support			
OS Support	Windows 10, Windows 8, Windows 7	Windows 10, Windows 8, Windows 7	Windows 10, Windows 8, Windows 7
Power/Thermal Specs			
Power Requirement (Max)	N/A	N/A	N/A
Power Consumption (Max)	N/A	N/A	N/A
Recommended Power Supply	N/A	N/A	N/A
Heat Dissipation	N/A	N/A	N/A
Physical Information			
Mounting	Pedestal, VESA, Wall and Ceiling mount, Benchtop	Pedestal, VESA, Wall and Ceiling mount, Benchtop	Pedestal, VESA, Wall and Ceiling mount, Benchtop
Net Weight	32 Lbs/ 14.52 kg	34 Lbs / 15.42 Kg	35 Lbs / 15.88 Kg
Physical Dimension (W x H x D)	14.51 x 12.42 x 4.09 inch 368.6 x 315.5 x 103.9 mm	15.88 x 14.07 x 4.36 inch 403.4 x 357.4 x 110.7 mm	17.80 x 15.19 x 4.40 inch 452.1 x 385.8 x 111.8 mm
Recommended Cutout	N/A	N/A	N/A
Dimension (WxH)	N/A	N/A	N/A
Environmental			
Operating Temp	0~50°C (32~122°F)	0~50°C (32~122°F)	0~50°C (32~122°F)
Storage Temp	-20~60°C (-4~140°F)	-20~60°C (-4~140°F)	-20~60°C (-4~140°F)
Relative Humidity	0~95%	0~95%	0~95%
IP/NEMA Rating	Meets NEMA 4X	Meets NEMA 4X	Meets NEMA 4X
Certification	N/A	N/A	N/A